

Orange County Fire Authority

Unincorporated Silverado, Modjeska and Trabuco Canyons and Eastern Cleveland National Forest Ember/ Fire Hazard Severity Zones

Data Reference and Symbology

- * State Responsibility Area
- Adopted Very High FHSZ
- Adopted High FHSZ
- Adopted Moderate FHSZ
- Incorporated Cities
- Unincorporated Areas
- OC Boundary
- Local Roads
- Major Roads



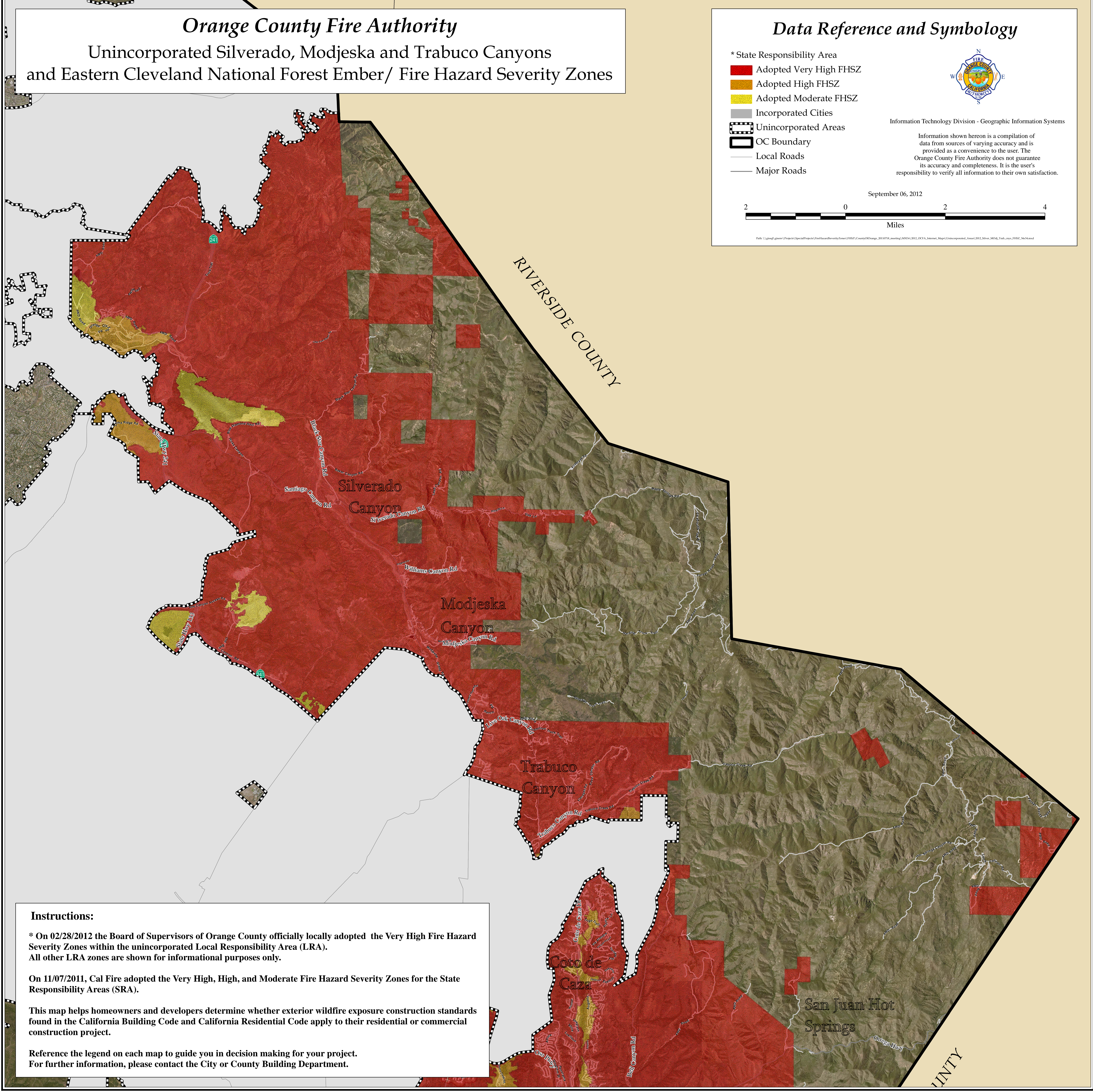
Information Technology Division - Geographic Information Systems

Information shown herein is a compilation of data from sources of varying accuracy and is provided as a convenience to the user. The Orange County Fire Authority does not guarantee its accuracy and completeness. It is the user's responsibility to verify all information to their own satisfaction.

September 06, 2012



Path: \\gmsqlgmserv\Projects\SpecialProjects\FireHazardSeverityZones\FHSZ\CountyOCChange_20100718_meeting\MOD\2012_OCFA_Internet_Maps\Unincorporated_Areas\2012_Silver_MoJd_Trabuco_FHSZ_3404.mxd



Instructions:

* On 02/28/2012 the Board of Supervisors of Orange County officially locally adopted the Very High Fire Hazard Severity Zones within the unincorporated Local Responsibility Area (LRA). All other LRA zones are shown for informational purposes only.

On 11/07/2011, Cal Fire adopted the Very High, High, and Moderate Fire Hazard Severity Zones for the State Responsibility Areas (SRA).

This map helps homeowners and developers determine whether exterior wildfire exposure construction standards found in the California Building Code and California Residential Code apply to their residential or commercial construction project.

Reference the legend on each map to guide you in decision making for your project. For further information, please contact the City or County Building Department.