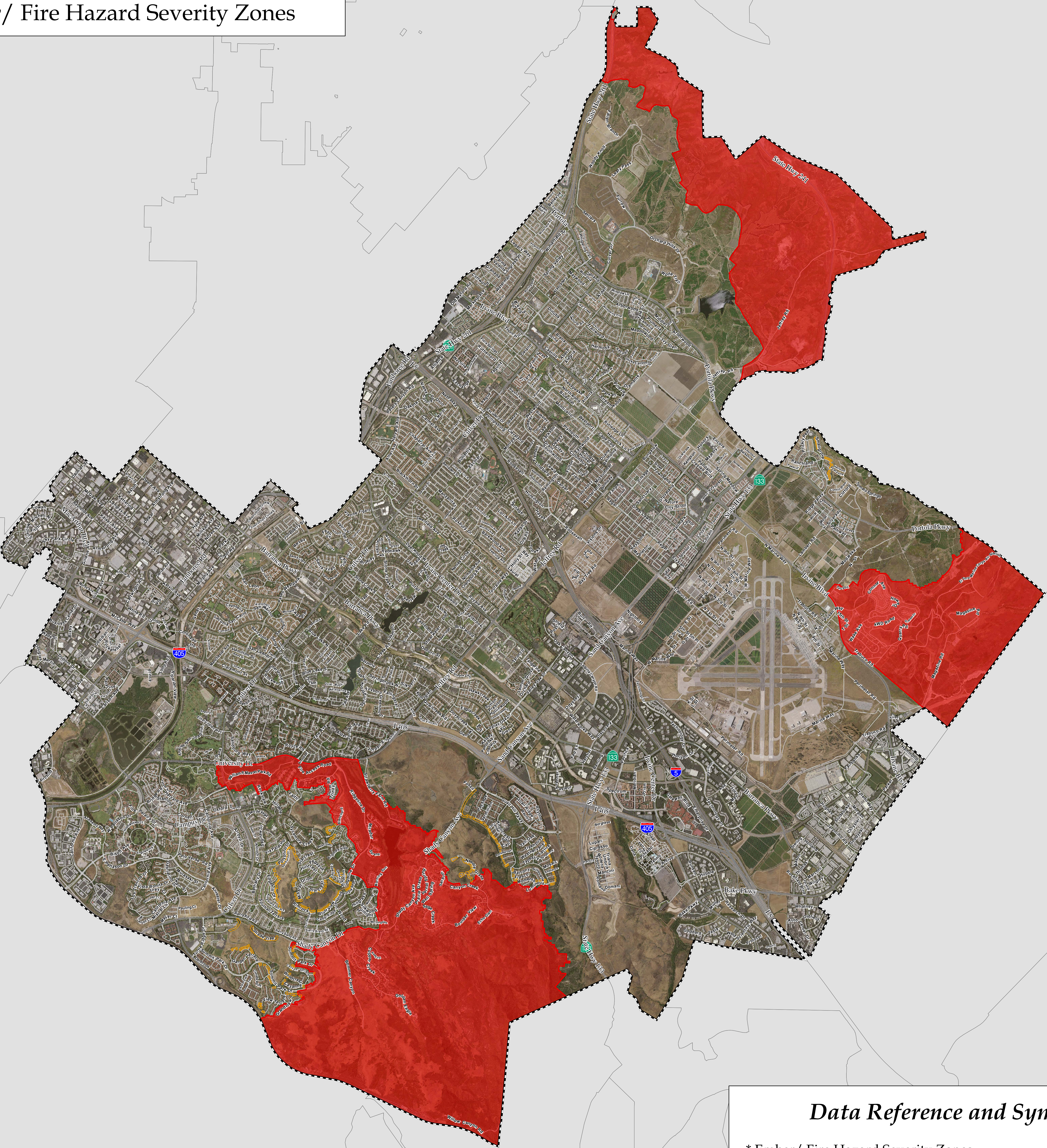


**Orange County Fire Authority**  
**Irvine Ember/ Fire Hazard Severity Zones**



**Instructions:**


\* On 02/28/2012 the City Council of the City of Irvine officially locally adopted the Very High Fire Hazard Severity Zones, and has adopted a 100 ft buffer zone & a citywide roofing/ vent requirement.


This map helps homeowners and developers determine whether exterior wildfire exposure construction standards found in the California Building Code and California Residential Code apply to their residential or commercial construction project.


Reference the legend on each map to guide you in decision making for your project.  
For further information, please contact the City or County Building Department.


### Data Reference and Symbology


\* Ember/ Fire Hazard Severity Zones


 Adopted Very High FHSZ (02/28/2012)

 100 ft Buffer Zone

 Irvine


 Major Roads

 Local Roads



Information Technology Division - Geographic Information Systems

Information shown hereon is a compilation of data from sources of varying accuracy and is provided as a convenience to the user. The Orange County Fire Authority does not guarantee its accuracy and completeness. It is the user's responsibility to verify all information to their own satisfaction.



Miles

Path: \\g:\info\gis\m\Projects\SpecialProjects\FireHazardSeverityZones\FHSZ\CountyOfOrange\_20110718\_meeting\MXD\2012\_OCFA\_Internet\_Map\2012\_REV\_FHSZ\_3424.mxd

September 05, 2012