



The Orange County Fire Authority

ANNUAL REPORT 1999

Our Mission

We proudly serve the changing needs of our communities by providing the highest quality regional emergency, safety, and support services with:



Professionalism
Enthusiasm
Organizational Integrity
Pride
Leadership
Effectiveness

Our people pledge a commitment to preserving the quality of life. We protect lives, property, and the environment with compassion, vigilance, and dedication to excellence.

**Orange County Fire Authority
Board of Directors**

*Todd Spitzer, County of Orange
Chair*

*Shawn Boyd, Seal Beach
Vice Chair*

*Bob Bell, Villa Park
Ken Blake, La Palma
Sherri Butterfield, Mission Viejo
Mark Goodman, Laguna Niguel
John Greiner, San Juan Capistrano
Barbara Kiley, Yorba Linda
Tony Lam, Westminster
Chris Lowe, Placentia
Patsy Marshall, Buena Park
Frank McCoy, Cypress*

*Ruby Netzley, Dana Point
Marilynn Poe, Los Alamitos
Dr. Brenda Ross, Laguna Woods
Susan Ritschel, San Clemente
R. Craig Scott, Laguna Hills
David Shawver, Stanton
Mike Ward, Irvine
Tracy Wills Worley, Tustin
Helen Wilson, Lake Forest
Tom Wilson, County of Orange*

MESSAGE FROM THE CHIEF

It is my pleasure to present the Orange County Fire Authority's 1999 Annual Report. OCFA's continued focus on all-around quality of service and sound fiscal management has once again resulted in a value-added year for the people we so proudly serve.

Our first two-year budget was implemented in 1999; it more efficiently addresses our overall financial planning efforts. This work has resulted in a stronger foundation from which the OCFA moves to the future. The next important step is the implementation of the strategic planning process. This process, currently underway, was approved by the Board of Directors in January and will more clearly merge the needs of our diverse communities and our organization with the available resources.

After a rigorous effort spanning many years, the so-called "equity" issue was resolved in December, 1999, when all twenty OCFA partner entities approved revisions to the amended Joint Powers Agreement. The collective effort of our Board of Directors, City Managers, and OCFA members was instrumental in resolving this very important public policy issue.

During the year, our Comprehensive Annual Financial Report (CAFR) was singled out for the prestigious Certificate of Achievement for Excellence in Financial Reporting—the highest possible recognition. Our OCFA was also recognized by the Municipal Treasurers Association for meeting the Association's standards for investment policies.

In 1999, 13 of our members retired, 64 were promoted, and 42 people were hired. The opening of Station 20 at the MCAS El Toro site, the addition a career-staffed Paramedic Assessment Engine at Station 10, and the conversion of Engine 19 to a Paramedic Engine were important service delivery enhancements and provided additional career opportunities to OCFA members.

The issues associated with our aging workforce will continue to challenge our OCFA for the foreseeable future. This wealth of knowledge and the years of experience cannot be easily replaced, underscoring the importance of investing in ourselves. Engaging our members in activities that lead to success continues to be a high priority. In 1999, this effort dramatically increased with the addition of several new project teams, all of which are focused on improving the services provided by OCFA, both for our members, and for the people living or working in the neighborhoods and communities we so vigilantly serve.

The members of OCFA continue to give back to our communities through an array of charitable efforts, such as supporting the United Way, the Spark of Love Toy Drive, the Salvation Army, the Race for the Cure, and the Trauma Intervention Program.

Lastly, in spite of our providing over 800 public safety education programs, conducting more than 25,000 fire safety inspections, teaching 160 of our neighbors CPR, and providing extensive community educational outreach, 4 people died, 43 people suffered fire-related injuries, and

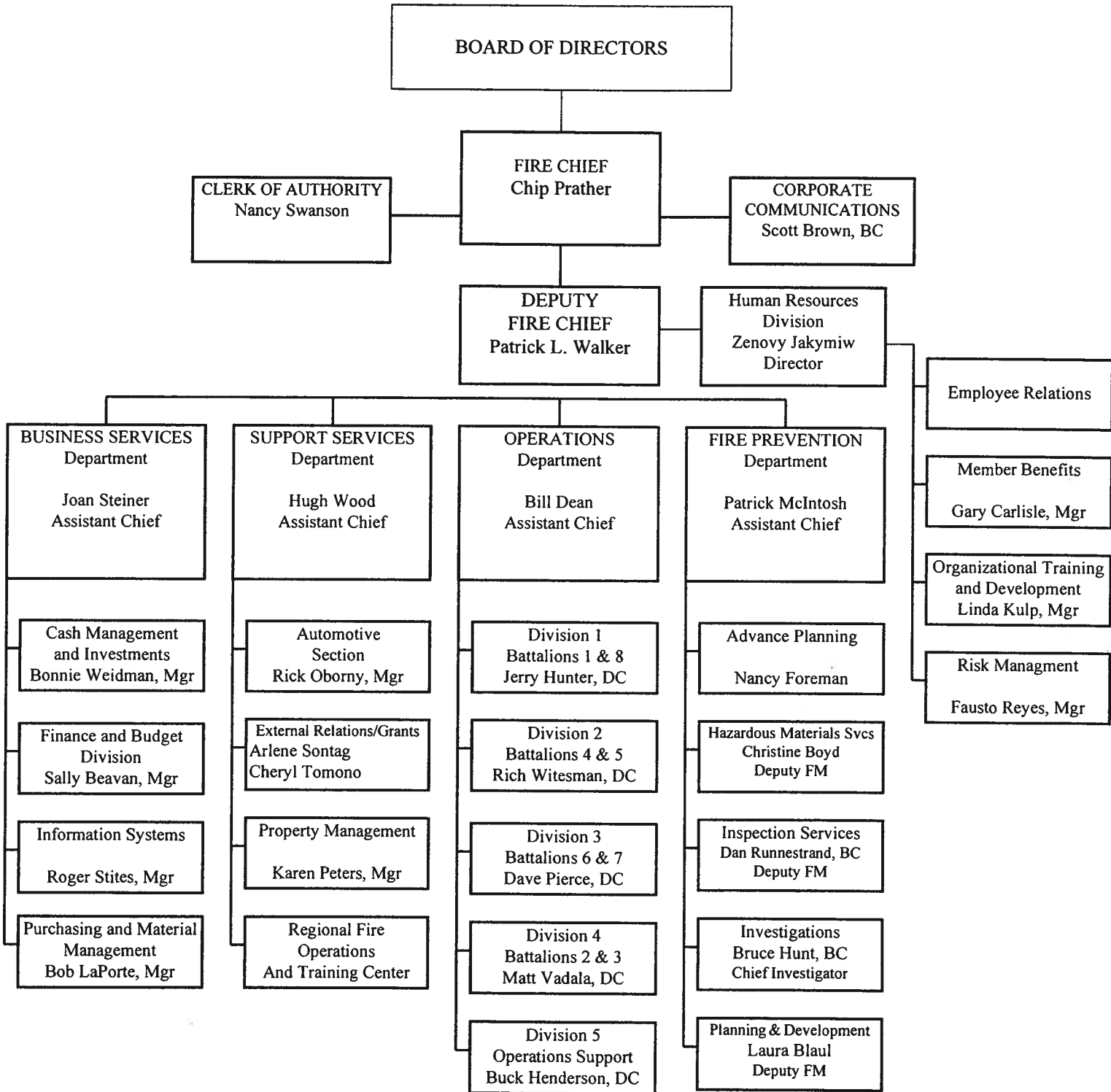
property valued at over \$13 million was destroyed by fire last year. Our field forces quickly responded to the needs of our communities 66,395 times (152,876 unit responses) during the period—on average, one unit response every 3.4 minutes of every day. Through it all, the people who required our emergency response rated those services as 97 percent perfect—a remarkable accomplishment.

While I am proud of all that we do at OCFA, I am most pleased with the way our members do their very best to help other people through their “bad” days and do so in ways that extend well beyond emergency response. I am privileged to serve as the Fire Chief of such a fine group of people, people who do great things every day for perfect strangers. As we collectively look forward to OCFA’s dynamic future in the 21st Century, know that we, the PEOPLE of OCFA, stand ready to continue our high level of customer-centered service and that you can count on us to be there every time.

*Chip Prather
Fire Chief*



OCFA ORGANIZATION CHART



STATISTICAL DATA COMPARISON *

| | FY 1995/96 | FY 1996/97 | FY 1997/98 | FY 1998/99 | FY 1999/00 |
|----------------------------------|--------------------|--------------------|--------------------|--------------------|--------------------|
| Salaries & Benefits | 89,481,336 | 90,384,362 | 94,230,197 | 99,593,124 | 105,056,397 |
| Services & Supplies | 13,682,318 | 13,441,438 | 14,091,749 | 13,615,536 | 14,153,447 |
| Taxes & Assessment | 3,500 | 3,500 | 3,500 | 4,000 | 4,000 |
| Equipment | 1,858,327 | 666,160 | 593,923 | 324,270 | 8,000 |
| Operating Transfer Out | 6,000,000 | | 21,206 | 4,443,292 | 6,458,243 |
| TOTAL GENERAL FUND | 111,025,481 | 104,495,460 | 108,940,575 | 117,980,222 | 125,680,087 |
| Capital Projects | 1,514,000 | 3,594,202 | 5,107,577 | 4,729,449 | 4,707,713 |
| Facilities & Communications | 294,300 | 582,437 | | 1,795,850 | 2,235,000 |
| Vehicle Replacement | 590,415 | 843,679 | 3,354,000 | 2,829,631 | 4,330,094 |
| Station Development Fees | 1,406,763 | 781,510 | 9,000 | | |
| Comm. & Info Systems Replacement | | | 649,872 | 2,160,850 | 4,390,959 |
| TOTAL BUDGET | 114,830,959 | 110,297,288 | 118,061,024 | 129,496,002 | 141,343,853 |
| STAFFING LEVEL | | | | | |
| Firefighters | 742 | 742 | 744 | 744 | 745 |
| Fire Management | 38 | 38 | 38 | 37 | 39 |
| Non-safety Staff | 228 | 242 | 250 | 241 | 251 |
| TOTAL | 1,008 | 1,022 | 1,032 | 1,022 | 1,035 |
| Reserve Firefighters | 719 | 633 | 631 | 465 | 560 |

* Budgeted amounts reflect all adjustments approved by the Board of Directors



OCFA ACTIVITY BY UNIT

| Air Utilities | # Responses |
|-------------------------|--------------------|
| A2 | 95 |
| A1 | 82 |
| A30 | 60 |
| A24 | 45 |
| A21 | 1 |
| Battalion Chiefs | # Responses |
| B8 | 831 |
| B4 | 720 |
| B5 | 667 |
| B6 | 621 |
| B1 | 582 |
| B3 | 505 |
| B2 | 368 |
| B7 | 288 |
| Engines | # Responses |
| PME E222 | 6,064 |
| PME E22 | 6,020 |
| PME E24 | 3,544 |
| PME E61 | 3,384 |
| PAU E19 | 3,109 |
| PME E46 | 2,748 |
| BLS E21 | 2,632 |
| PME E29 | 2,602 |
| PME E64 | 2,598 |
| PAU E63 | 2,583 |
| PME E62 | 2,455 |
| PAU E39 | 2,419 |
| BLS E48 | 2,379 |
| PME E34 | 2,257 |
| PAU E57 | 2,233 |
| PME E60 | 2,205 |
| PME E66 | 2,149 |
| BLS E37 | 2,071 |
| BLS E7 | 1,974 |
| PME E65 | 1,936 |
| BLS E26 | 1,813 |
| PAU E36 | 1,738 |
| BLS E4 | 1,703 |

| Engines | # Responses |
|----------------|--------------------|
| BLS E38 | 1,688 |
| BLS E31 | 1,687 |
| BLS E17 | 1,607 |
| PAU E13 | 1,601 |
| PAU E27 | 1,599 |
| BLS E25 | 1,537 |
| PAU E35 | 1,472 |
| PAU E28 | 1,440 |
| PAU E6 | 1,417 |
| PAU E9 | 1,417 |
| PAU E30 | 1,345 |
| E32 | 1,321 |
| PAU E2 | 1,297 |
| PAU E50 | 1,215 |
| BLS E5 | 1,186 |
| BLS E12 | 1,143 |
| PME E23 | 1,141 |
| PAU E45 | 1,133 |
| BLS E10 | 994 |
| PAU E54 | 957 |
| PAU E44 | 909 |
| BLS E226 | 889 |
| PAU E8 | 823 |
| BLS E219 | 775 |
| BLS E224 | 755 |
| BLS E53 | 514 |
| E207 | 493 |
| BLS E229 | 482 |
| PAU E52 | 466 |
| PAU E42 | 407 |
| PAU E40 | 371 |
| PAU E20 | 364 |
| BLS E230 | 345 |
| BLS E225 | 334 |
| E232 | 320 |
| BLS E202 | 302 |
| E233 | 299 |
| E18 | 269 |
| E213 | 256 |
| E1 | 241 |
| E210 | 232 |

BLS - Basic Life Support
 PAU - Paramedic Assessment Unit
 PME - Paramedic Engine

OCFA ACTIVITY BY UNIT

| Engines | # Responses |
|-----------------------|--------------------|
| BLS E11 | 162 |
| BLS E3 | 161 |
| E315 | 126 |
| BLS E244 | 122 |
| E16 | 91 |
| E240 | 90 |
| E218 | 87 |
| E91 | 75 |
| E250 | 70 |
| E14 | 67 |
| E332 | 48 |
| E307 | 47 |
| E319 | 35 |
| E326 | 35 |
| E342 | 27 |
| E318 | 26 |
| E253 | 24 |
| E330 | 21 |
| E201 | 19 |
| E357 | 9 |
| E208 | 7 |
| E15 | 1 |
| ARFF | # Responses |
| F2 | 181 |
| F1 | 158 |
| F3 | 146 |
| F27 | 6 |
| Dozers | # Responses |
| K10 | 69 |
| K19 | 65 |
| K53 | 3 |
| Waters Tenders | # Responses |
| W7 | 122 |
| W10 | 38 |
| W23 | 34 |
| W40 | 30 |
| W16 | 28 |
| W2 | 1 |
| Helicopters | # Responses |
| HC 241 | 69 |
| HC 41 | 59 |

| Ambulances | # Responses |
|-----------------------|--------------------|
| S64 | 2,393 |
| S50 | 1,999 |
| S66 | 1,822 |
| Paramedic Vans | # Responses |
| M21 | 3,426 |
| M4 | 2,978 |
| M26 | 2,974 |
| M31 | 2,796 |
| M48 | 2,548 |
| M17 | 2,509 |
| M5 | 2,390 |
| M38 | 2,330 |
| M7 | 2,123 |
| M32 | 1,235 |
| M22, 60,61,62,65 | 27 |
| Patrols | # Responses |
| P11 | 51 |
| P14 | 30 |
| P18 | 30 |
| P16 | 28 |
| P10 | 24 |
| P1 | 15 |
| P25 | 13 |
| P3 | 9 |
| P24 | 1 |
| Trucks | # Responses |
| T22 | 1,388 |
| T46 | 1,306 |
| T64 | 1,241 |
| T61 | 1,182 |
| T59 | 1,083 |
| T4 | 1,078 |
| T49 | 1,012 |
| T6 | 951 |
| T34 | 883 |
| T9 | 864 |
| T43 | 863 |
| T17 | 754 |
| T45 | 724 |
| T44 | 76 |

TOTAL UNIT RESPONSES BY JURISDICTION
January 1 through December 31, 1999

| Jurisdiction | Unit Responses | Jurisdiction | Unit Responses |
|-----------------------------|-----------------------|---------------------|-----------------------|
| Buena Park | 9,047 | Placentia | 4,117 |
| Cypress | 5,515 | San Clemente | 7,021 |
| Dana Point | 4,395 | San Juan Capo | 4,760 |
| Irvine | 18,729 | Seal Beach | 6,398 |
| Laguna Hills | 4,734 | Stanton | 3,403 |
| Laguna Niguel | 5,394 | Tustin | 8,390 |
| Laguna Woods | 5,309 | Villa Park | 766 |
| Lake Forest | 7,547 | Westminster | 12,925 |
| La Palma | 1,518 | Yorba Linda | 5,274 |
| Los Alamitos | 2,320 | Unincorporated | 24,769 |
| Mission Viejo | 10,545 | | |
| TOTAL UNIT RESPONSES | | | 152,876 |

TOTAL INCIDENTS BY MAJOR CATEGORY

| | FIRES | EMS | OTHER | TOTAL |
|---------------------|--------------|---------------|---------------|---------------|
| Buena Park | 179 | 3,106 | 1,700 | 4,985 |
| Cypress | 82 | 1,346 | 755 | 2,183 |
| Dana Point | 76 | 1,294 | 665 | 2,035 |
| Irvine | 291 | 3,963 | 3,387 | 7,641 |
| Laguna Hills | 70 | 1,320 | 656 | 2,046 |
| Laguna Niguel | 86 | 1,510 | 902 | 2,498 |
| Laguna Woods | 6 | 2,256 | 407 | 2,669 |
| Lake Forest | 110 | 1,943 | 1,050 | 3,103 |
| La Palma | 30 | 364 | 209 | 603 |
| Los Alamitos | 33 | 539 | 334 | 906 |
| Mission Viejo | 142 | 3,075 | 1,627 | 4,844 |
| Placentia | 98 | 1,319 | 736 | 2,153 |
| San Clemente | 101 | 1,609 | 1,032 | 2,742 |
| San Juan Capistrano | 72 | 1,239 | 672 | 1,983 |
| Seal Beach | 71 | 2,100 | 575 | 2,746 |
| Stanton | 93 | 1,470 | 713 | 2,276 |
| Tustin | 150 | 2,160 | 1,171 | 3,481 |
| Villa Park | 12 | 137 | 110 | 259 |
| Westminster | 207 | 3,675 | 1,279 | 5,161 |
| Yorba Linda | 112 | 1,252 | 851 | 2,215 |
| Unincorporated | 299 | 5,775 | 3,792 | 9,866 |
| TOTAL | 2,320 | 41,452 | 22,623 | 66,395 |

STATISTICAL SUMMARY

| | 1996 | 1997 | 1998 | 1999 |
|-------------------------------|----------------|----------------|----------------|----------------|
| Population Served | 1,106,760 | 1,130,169 | 1,164,893 | 1,193,638 |
| Dwelling Units | 408,792 | 416,229 | 423,526 | 431,193 |
| Assessed Values * | 61,325,478,690 | 63,321,319,849 | 68,200,161,492 | 75,003,955,464 |
| INCIDENT SUMMARY | | | | |
| Fires | 2,817 | 2,641 | 2,268 | 2,320 |
| EMS | 35,663 | 37,077 | 38,173 | 41,452 |
| Total Other Types | 23,680 | 24,938 | 25,567 | 22,623 |
| TOTAL ALL INCIDENTS | 62,160 | 64,656 | 66,008 | 66,395 |
| Other Incident Types Include: | | | | |
| Ruptures | 199 | 232 | 260 | 234 |
| Hazmat | 1,500 | 1,558 | 1,790 | 1,439 |
| Service Call | 4,006 | 4,575 | 4,235 | 4,295 |
| Good Intent | 13,393 | 13,707 | 13,227 | 11,982 |
| False Alarms | 4,202 | 4,310 | 5,581 | 4,330 |
| Miscellaneous | 380 | 556 | 474 | 343 |
| TOTAL UNIT RESPONSES | 142,823 | 144,804 | 149,150 | 152,876 |
| Total Mutual Aid Received | 2,643 | 4,272 | 4,309 | 4,156 |
| Total Mutual Aid Provided | 3,624 | 5,901 | 5,405 | 4,550 |
| Total Property Loss | 23,863,016 | 18,284,012 | 16,739,602 | 13,238,363 |
| Total Fire Injuries | 52 | 75 | 52 | 43 |
| Total Fire Deaths | 5 | 8 | 5 | 4 |
| Total Inspections | 23,279 | 29,570 | 26,791 | 24,332 |

* Assessed values only for Orange County Fire Authority areas served



1999 OCFA Major Incidents

JANUARY 14—A fire in the 27800 block of Cordero Lane in Mission Viejo destroys a two-story home and causes more than \$300,000 in damage. A total of 30 firefighters respond to the incident and control the fire in 40 minutes.

FEBRUARY 2—Sparks from a blowtorch ignite a fire at a construction site on Lakeside Drive in Buena Park, causing more than \$500,000 in damage.

MARCH 24—More than 100 employees are evacuated at a metal finishing company in the 8400 block on Standustrial Way in Stanton due to a toxic chemical spill. The spill was caused when a 30-gallon tank filled with sodium hydrosulfite began to smolder. No injuries are reported.

APRIL 11—A fire in the 6100 block of Saddletree Lane in Yorba Linda causes \$350,000 damage to a single-family home. The fire was caused by an ember that escaped from a chimney and landed on a wood-shake roof.

JUNE 30—Two young children are killed and several other people are injured when a car bursts into flames after being hit from behind by other vehicle on Prospect Avenue at Theodora Drive in Tustin.

AUGUST 12—A four-alarm fire at a Cabinet Company on Oak Street in Stanton causes approximately \$220,000 in damage and takes 75 firefighters more than two hours to control.



1999 OCFA Major Incidents



AUGUST 21—A total of 95 firefighters contain a brush fire to 25 acres at Santiago Canyon Road and Silverado Canyon Road.

SEPTEMBER 25—An attic fire at a Chinese Restaurant at 14825 Jeffrey Road in Irvine causes approximately \$500,000 in damage to the structure and \$300,000 to the contents.

OCTOBER 16—A 7.1 earthquake at 2:46 a.m. with an epicenter in the Mojave Desert causes minimal damage in Orange County. Some homes are without electricity for periods, but no major structural damage is reported.

DECEMBER 26—Damage is estimated at \$1 million as a spa and massage center in Laguna Hills is destroyed in the early morning hours. It takes 75 firefighters about one hour to put the fire out. An arsonist is caught setting the fire on video.

DECEMBER 27—A wildland fire burns 38 acres in Trabuco Canyon. A total of 19 engines, more than 100 firefighters, two helicopters and two fixed wing aircraft combine to fight the blaze.

CUSTOMER SATISFACTION SURVEY

A Customer Satisfaction Survey program was implemented in November 1998, to determine the degree of customer satisfaction with services rendered by the members of the Operations Department during emergencies. The data compiled from these surveys is useful in illustrating superior interpersonal and professional skills, as well as identifying any potential problem areas.

How the program works

Data related to structure fires and non-fatality emergency medical responses is extracted from the Orange County Fire Incident Reporting System (OCFIRS). The data extracted includes incident number, date of incident, type of incident, involved property owner/patient name and mailing address, and responding units. Using this information, survey forms are mailed to property owners/patients on a weekly basis. When forms are returned completed, the responses are input to the Survey Database. Telephone calls are made to those who included negative comments or questions on their returned forms.

Questions included on Survey Form

Recipients of the form are asked to rate for services based on the following:

1. Promptness of the 911 system.
2. Courtesy of the 911 operator.
3. Promptness of the fire department response.
4. Courtesy and helpfulness of the fire department personnel.
5. Fire department personnel took time to explain their actions.
6. Professional appearance of the fire department personnel.
7. Overall satisfaction with the fire department service.

About the Summary Statistics

Data obtained through this process is summarized in a monthly report to the Chief. Copies are also provided to executive management, division chiefs, battalion chiefs, and station captains. The report is arrayed by Battalion and Unit, and includes the following data: number of survey responses received; the simple numeric average score for each of the seven questions; the average score for questions 1 and 2, which pertain to the 911 communications system; the average scores for questions 3 through 7, which pertain to services provided in the field; an overall average for all questions, and any comments included on the survey form.

Survey Results

Providing quality care is the goal of the Fire Authority, our customer's opinions are very valuable to us. The results indicate that our customers are indeed pleased with our service. We have experienced a very high rate of return (over 32%) for forms mailed. We have received an overall satisfaction rating of over 97%!

CUSTOMER SATISFACTION DATA BY CITY/AREA

| CITY OR AREA | SURVEY FORMS SENT | SURVEY FORMS RETURNED | OVERALL SATISFACTION RATE |
|------------------------|-------------------------|-----------------------------|---------------------------------|
| Aliso Viejo | 730 | 224 | 96% |
| Buena Park | 2,452 | 635 | 97% |
| Coto de Caza | 114 | 46 | 96% |
| Cypress | 1,129 | 387 | 97% |
| Dana Point | 1,037 | 351 | 97% |
| El Modena | 55 | 13 | 92% |
| Emerald Bay | 14 | 1 | 100% |
| Foothill Ranch | 139 | 63 | 97% |
| Irvine | 3,375 | 973 | 97% |
| La Palma | 337 | 113 | 96% |
| Laguna Hills | 1,245 | 339 | 96% |
| Laguna Niguel | 1,309 | 457 | 97% |
| Laguna Woods | 2,543 | 1,184 | 97% |
| Lake Forest | 1,604 | 522 | 97% |
| Los Alamitos | 400 | 116 | 97% |
| Midway City | 294 | 52 | 97% |
| Mission Viejo | 2,461 | 868 | 97% |
| Modjeska Canyon | 14 | 5 | 100% |
| Newport Coast | 80 | 18 | 99% |
| Orange Park Acres | 31 | 7 | 100% |
| Placentia | 1,134 | 354 | 97% |
| Portola Hills | 69 | 25 | 96% |
| Rancho Santa Margarita | 473 | 160 | 97% |
| Rossmoor | 207 | 107 | 98% |
| San Clemente | 1,194 | 436 | 97% |
| San Juan Capistrano | 1,031 | 333 | 97% |
| Santa Ana Heights | 61 | 16 | 99% |
| Santiago Canyon | 7 | 2 | 98% |
| Seal Beach | 1,811 | 714 | 98% |
| Silverado Canyon | 34 | 12 | 95% |
| Stanton | 1,307 | 244 | 96% |
| Sunset Beach | 15 | 3 | 100% |
| Trabuco Canyon | 143 | 45 | 98% |
| Tustin | 1,980 | 610 | 96% |
| Villa Park | 116 | 57 | 98% |
| Westminster | 2,961 | 829 | 96% |
| Yorba Linda | 1,028 | 384 | 97% |
| TOTAL/AVERAGE % | 32,934 | 10,705 | 97% |

Community Events

Members of the OCFA take an active part in the communities in which they serve, including participating in the following events:

- BUENA PARK** Silverado Days, October
Buena Park Employee Safety Fair, 1999 first year
Buena Park Senior Health and Wellness Fair, October
Buena Park Public Works Safety Day
- CYPRESS** Cypress Police Dept. DARE Fair, June
Cypress Community Festival, July
Cypress Octoberfest, October
Cypress Holiday Bizarre/Arts and Crafts, November
Cypress Tree Lighting/City Hall, December 8
Cypress Senior Health and Wellness Fair, October
- DANA POINT:** Tall Ships Festival
- FOOTHILL RANCH** Saddleback Church Easter Breakfast
- IRVINE** Irvine Police Dept. DARE Fair, May
Irvine Harvest Festival October
- LA PALMA** La Palma Days, October
La Palma "Every 15 Minutes" every two years, May
- LAGUNA HILLS** KidSafe Saddleback Memorial Medical Center, November
- LAKE FOREST** Summer's End Event Saddleback Church
- LOS ALAMITOS** Los Alamitos 10 K February 26
Los Alamitos Chamber of Commerce Summer Fest, June
Los Alamitos 4th of July Parade
Fourth of July, Los Alamitos Naval Weapons Station
Christmas Sing-A-Long Cotton Wood Park 2nd year
- MISSION VIEJO** Mission Viejo Elks Club Annual Dinner & Awards Ceremony
Mission Viejo Mall Career Day, April
Mission Viejo Street Faire & 4th of July Fireworks
Mission Viejo Library Summer Safety Program
Mission Viejo Police Dept. DARE Fair

PLACENTIA City of Placentia Health & Safety Fair

RANCHO SANTA MARGARITA Santa Margarita Days Fiesta & Rodeo, May

SAN CLEMENTE Holiday Parade with Santa Claus on Fire Engine

SAN JUAN CAPISTRANO Swallows Day Parade

SEAL BEACH/SUNSET BEACH
Seal Beach Sunset Beach Art Festival

STANTON Stanton Home Depot Child Health & Safety Fair

TUSTIN
Tustin Tiller Days, July
Tustin Home Depot Community Awareness Day
Tustin Homeowners Association 4th of July Parade

VILLA PARK
Villa Park Little League Parade, March
City of Villa Park Family Picnic/Villa Park Days, June

WESTMINSTER
Westminster Tet Festival
Westminster Spring Festival, March
City of Westminster Safety Day, July
Halloween Safety @ Westminster Mall, October
Westminster Public Works Event (Summer)

YORBA LINDA
Yorba Linda Health and Safety Fair, April
East Lake Village Community Association Safety Awareness
Day, April
Yorba Linda Earthquake Preparedness & Safety Fair
Yorba Linda Chamber of Commerce Business Showcase

...and these events throughout the County

CHOC Walk, October
 Fire Prevention Week, October
 Fire Service Recognition Day, May
 Kinder Caminata, March @ Colleges throughout the County
 Mass Casualty Drills
 Orange County Employees Association Annual Health & Safety Fair
 Orange County Fair, July
 San Onofre Nuclear Generating Station annual exercise, September
 Spark of Love Toy Drive

Our People Are Our Most Important Asset

The Authority recognized the following individuals, who were promoted in 1999, at a Promotion Ceremony held on November 10th, at the Salvation Army Fellowship Hall.

DEPUTY CHIEF

Patrick Walker

ASSISTANT CHIEF

Patrick McIntosh

DIVISION CHIEF

Dave Pierce

Matt Vadala

BATTALION CHIEF

Scott Brown

Jorge Camargo

Dan Drake

Michael Moore

FIRE APPARATUS ENGINEERS

Gina Aubrey

Bret Borg

Steve Edwards

Craig Foley

Barry Hasterok

Tom Hoklotubbe

Matt Holke

Clyde Litton

Tim Merchant

Jack Perisho

Jay Quinty

Mike Reinhold

William Walker

Jeff Weiss

Robert Wilson

Larry Van Liew

NON-SAFETY PERSONNEL

Bob Bellfi, Accounting Specialist

Darci Bodin, Fire Safety Specialist I Trainee

Monica Dorfmeier, Senior Buyer

Christine Duker, Staff Assistant

Dustin Grinstead, Fire Safety Specialist I Trainee

Marilee Freville, Staff Assistant

Donna Filip, Senior Accounting Assistant

Stephen Hamilton, Senior Accountant Auditor

Mindi Isbell, Secretary II

Diane Jacobsen, Secretary II

Stacy Lambeth, Senior Fire Safety Specialist

Kathy Mazza, Senior Accounting Assistant

Randy Metz, Fire Safety Specialist II

Susan Morris, Fire Material Technician

Rick Oborny, Fleet Manager

Jenny Pham, Systems Program Analyst II

Mary Phillips, Senior Accounting Assistant

Tony Pirc, Fire Material Technician

Nick Pivaroff, Fire Safety Specialist Trainee

Marilyn Pizza, Supervising Buyer

Chi-Yung Shie, Data Base and Security Admin

FIRE CAPTAIN

Jeff Adams

Randy Adamson

Greg Bradshaw

Cliff Bramlette

Doug Brickell

David Cisar

Kristian Conception

Kenneth Cruz

Pete Curran

Kenny Dossey

Daniel Hanson

Robert Hutnyan

Mark Ledford

Eric Leverenz

William Lockhart

Doug Newgass

William Ryan

CT Smith

Robert Stocking

OCFA FIRE STATIONS

Proudly Serving the Communities of...

- ALISO VIEJO, Station 57**
BUENA PARK, Station 61
BUENA PARK, Station 62
BUENA PARK, Station 63
COSTA MESA, AIRPORT, Station 33
COTO DE CAZA, Station 40
CYPRESS, Station 12
CYPRESS, TRI-CITIES, Station 17
DANA POINT, DOHENY, Station 29
DANA POINT, NIGUEL, Station 30
EMERALD BAY, Station 11
FOOTHILL RANCH, Station 54
FULLERTON, AIRPORT, Station 41
IRVINE, Station 6
IRVINE, Station 38
IRVINE/LAKE FOREST, Station 20
IRVINE, INDUSTRIAL, Station 28
IRVINE, UNIVERSITY, Station 4
IRVINE, VALENCIA, Station 26
IRVINE, WOODBRIDGE, Station 36
LA PALMA, Station 13
LAGUNA HILLS/LAGUNA WOODS, Station 22
LAGUNA NIGUEL, Station 5
LAGUNA NIGUEL, BEAR BRAND, Station 49
LAGUNA NIGUEL, NORTH, Station 39
LAKE FOREST, Station 19
LOS ALAMITOS, Station 2
MIDWAY CITY, Station 25
MISSION VIEJO, Station 24
MISSION VIEJO, NORTH, Station 31
MISSION VIEJO, SOUTH, Station 9
MODJESKA, Station 16
NEWPORT COAST, Station 52
ORANGE, Station 1
PLACENTIA, BRADFORD, Station 35
PLACENTIA, VALENCIA, Station 34
PORTOLA HILLS, Station 42
RANCHO SANTA MARGARITA, Station 45
SAN CLEMENTE, Station 50
SAN CLEMENTE, Station 59
SAN CLEMENTE, Station 60
SAN JUAN CAPISTRANO, Station 7
SANTA ANA, AIRPORT, Station 27
SKYLINE, Station 8
SEAL BEACH, DOWNTOWN, Station 44
SEAL BEACH, FRWY, Station 48
SILVERADO, Station 14
SILVERADO (USFS), Station 15
STANTON, Station 46
SUNSET BEACH, Station 3
TRABUCO, Station 18
TUSTIN, Station 21
TUSTIN, Station 37
TUSTIN RANCH, Station 43
VILLA PARK, Station 23
WESTMINSTER, Station 64
WESTMINSTER, Station 65
WESTMINSTER, Station 66
YORBA LINDA, Station 10
YORBA LINDA, Station 53
YORBA LINDA, EAST, Station 32