



The Orange County Fire Authority

ANNUAL REPORT 1997

**Orange County Fire Authority
Board of Directors**

*R.. Craig Scott, Laguna Hills
Chair*

*Michael Ward, Irvine
Vice Chair*

*Patrick Ahle, San Clemente
Joe Barsa, Villa Park
Ken Blake, La Palma
Sherri Butterfield, Mission Viejo
Tom Carroll, Cypress
Brian Donahue, Stanton
Carol Downey, Placentia
Mark Goodman, Laguna Niguel
John Greiner, San Juan Capistrano
Marilyn Bruce Hastings, Seal Beach*

*Barbara Kiley, Yorba Linda
Ruby Netzley, Dana Point
Marilynn Poe, Los Alamitos
Margaret Shillington, Westminster
Gerald Sigler, Buena Park
Todd Spitzer, County of Orange
Tracy Wills Worley, Tustin
Helen Wilson, Lake Forest
Tom Wilson, County of Orange*

MESSAGE FROM THE CHIEF

It is my privilege to present my first annual report as Chief of the Orange County Fire Authority.

In our second year as a joint powers authority, we made significant progress in both administration and in our ability to respond to emergencies. Part of that growth has included installation of a new management team. Two OCFA veterans—Bill Dean and Patrick Walker—were appointed Assistant Chiefs. Chief Dean who has been with the various incarnations of this department for 28 years, now heads the Operations Department, and Chief Walker who has spent 26 years here, leads the Community Safety and Education Department. They join Deputy Chief Ken MacLeod; Chief Jim Radley, who now leads Internal Consulting; Technical Services Chief Hugh Wood; and Finance, Administration and Human Resources Chief Joan Steiner to form what I believe is an extremely strong leadership group with talents and experience that complement each other very well.

We established a link between our dispatch operations and that of the other Orange County cities that are not part of OCFA. This means both dispatch centers can allocate the closest resources to an emergency regardless of jurisdictional boundaries, providing seamless coverage around the county.

The Employee Training and Development Section conducted one Firefighter Recruit Academy, which graduated 19 new OCFA firefighters. Eleven career firefighters completed paramedic training, a total of 194 men and women completed the various Paid Call Firefighter academies.

During 1997, we added more than 100,000 people and nearly 8,000 dwellings to the area we serve. Despite that, we actually responded to 176 fewer fires than we did in 1996. I would like to think our continuing efforts to educate the public on fire safety had something to do with that. OCFA received the "Learn Not To Burn" Champion Award from the National Fire Protection Association.

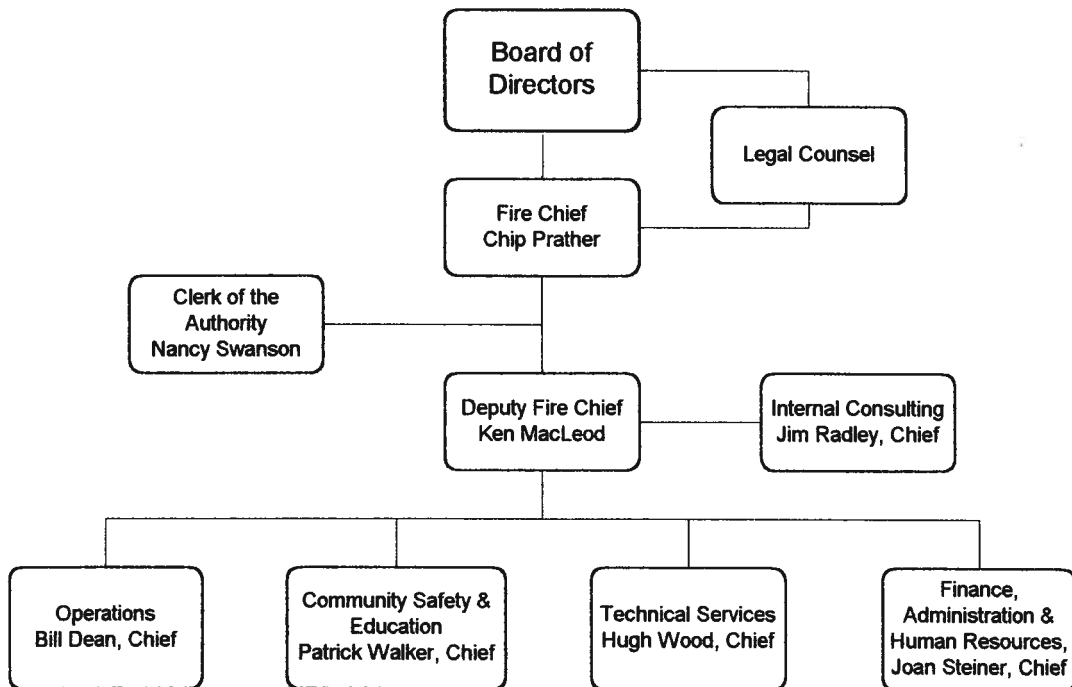
Although we were called to fewer fires than the year before, overall we handled about 2,500 more emergencies. And, as always, the men and women of OCFA acquitted themselves beautifully. This was especially true during the Baker Canyon Fire in October, a wild fire that required a 36 hour non-stop effort on everyone's part. Three members of Engine 315 earned the Authority's Medal of Valor for their heroic efforts to save the lives of seven people during that fire.

I am proud of all our people for what they have accomplished this year, and look forward to continuing to live up to our high standards. At the Orange County Fire Authority, we believe very strongly that we have Proud Traditions and a Dynamic Future!

*Chip Prather
Fire Chief*

STATISTICAL DATA COMPARISON			
	FY 1995/96	FY 1996/97	FY 1997/98
APPROVED BUDGETS			
Salaries & Benefits	89,481,336	90,384,362	92,133,553
Services & Supplies	13,682,318	13,441,438	12,559,151
Taxes & Assessment	3,500	3,500	3,500
Equipment	1,858,327	666,160	439,788
Operating Transfer Out	6,000,000	0	21,206
TOTAL GENERAL FUND	111,025,481	104,495,460	105,157,198
Capital Projects	1,514,000	3,594,202	4,289,362
Facilities & Communications	294,300	582,437	649,872
Vehicle Replacement	590,415	843,679	3,354,000
Station Development Fees	1,406,763	781,510	9,000
TOTAL BUDGET	114,830,959	110,297,288	113,459,432
STAFFING LEVEL			
Firefighters	696	680	721
Fire Management	37	37	37
Non-safety Staff	212	228	234
TOTAL	945	945	992
Paid Call Firefighters	719	633	631

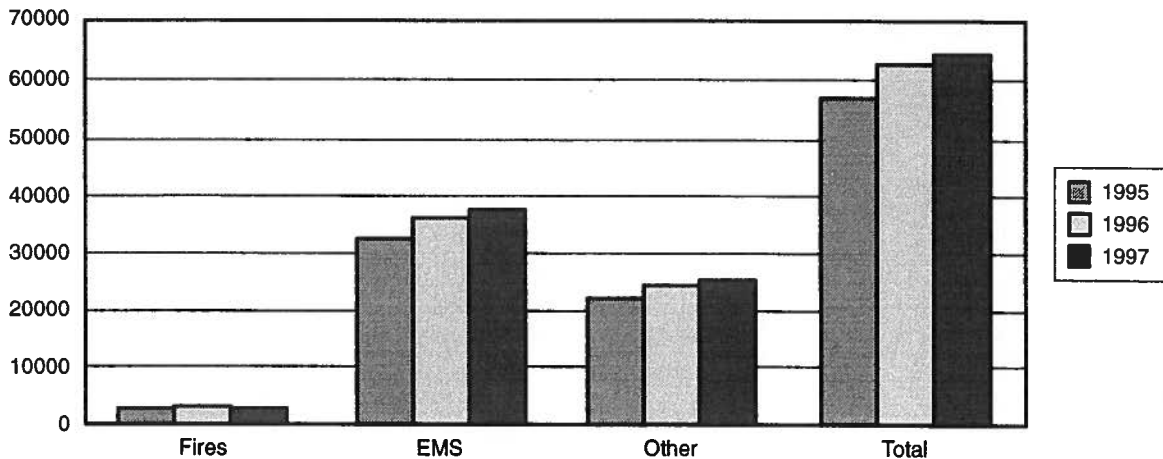
OCFA ORGANIZATION CHART



STATISTICAL SUMMARY

	1995	1996	1997
Population Served	1,102,882	1,106,760	1,130,169
Dwelling Units	400,473	408,792	416,229
Assessed Values	80,681,419,670	77,682,649,461	85,838,677,689
INCIDENT SUMMARY			
Fires	2,618	2,817	2,641
EMS	32,246	35,663	37,077
Total Other Types	21,490	23,680	24,938
TOTAL ALL INCIDENTS	56,354	62,160	64,656
Other Incident Types Include:			
Ruptures	151	199	232
Hazmat	1,362	1,500	1,558
Service Call	3,505	4,006	4,575
Good Intent	12,583	13,393	13,707
False Alarms	3,618	4,202	4,310
Natural Disaster	43	15	43
Miscellaneous	228	365	513
TOTAL UNIT RESPONSES	130,594	142,823	144,804
Total Mutual Aid Received	2,469	2,643	4,272
Total Mutual Aid Provided	3,648	3,624	5,901
Total Property Loss	13,384,665	23,863,016	18,284,012
Total Fire Injuries	58	52	75
Total Fire Deaths	3	5	8
Total Inspections	20,109	23,279	29,570

INCIDENT COMPARISON



TOTAL UNIT RESPONSES BY JURISDICTION

January 1 through December 31, 1997

Jurisdiction	Unit Responses	Jurisdiction	Unit Responses
Buena Park	9,637	Placentia	4,265
Cypress	5,351	San Clemente	7,761
Dana Point	4,754	San Juan Capo	4,627
Irvine	19,162	Seal Beach	6,420
Laguna Hills	4,603	Stanton	3,523
Laguna Niguel	5,402	Tustin	8,363
Lake Forest	6,963	Villa Park	847
La Palma	1,344	Westminster	13,349
Los Alamitos	1,984	Yorba Linda	4,824
Mission Viejo	10,030	Unincorporated	28,558

TOTAL INCIDENTS BY MAJOR CATEGORY

	FIRES	EMS	OTHER	TOTAL
Buena Park	221	2,817	1,983	5,021
Cypress	101	1,218	751	2,070
Dana Point	80	1,218	871	2,169
Irvine	344	3,536	3,808	7,688
Laguna Hills	66	1,278	750	2,094
Laguna Niguel	82	1,306	995	2,383
Lake Forest	99	1,623	1,038	2,760
La Palma	39	299	208	546
Los Alamitos	42	451	301	794
Mission Viejo	179	2,607	1,677	4,463
Placentia	103	1,228	753	2,084
San Clemente	129	1,605	1,252	2,986
San Juan Capistrano	92	1,052	785	1,929
Seal Beach	77	2,114	598	2,789
Stanton	96	1,422	785	2,303
Tustin	172	1,905	1,430	3,507
Villa Park	16	138	118	272
Westminster	234	3,339	1,638	5,211
Yorba Linda	88	1,064	862	2,014
Unincorporated	381	6,857	4,335	11,573
TOTAL	2,641	37,077	24,938	64,656

**OCFA ACTIVITIES
BUSIEST COMPANIES BY TYPE**

Engines	Top 12
PME 222	3,928
PME 22	3,770
PME 61	3,414
PME 24	2,983
PME 29	2,729
PAU E19	2,550
PME 64	2,535
E 21	2,518
PME 66	2,434
PME 46	2,424
PME 60	2,403
PME 62	2,398
Trucks	Top 5
T22	1,731
T46	1,317
T61	1,181
T64	1,081
T4	1,046
Battalion Chiefs	Top 4
B8	907
B4	846
B6	767
B1	763

Brush Engines	Top 2
E315	172
E307	90
Medic Vans	Top 5
M21	3,281
M4	3,072
M26	2,983
M48	2,628
M31	2,451
Air Utility	Top 2
A2	58
A24	34
Patrols	Top 2
P11	44
P24	40
Crews	Top 2
57	65
28	49
Water Tenders	Top 2
W7	88
W10	35
Dozers	Top 2
10	63
19	60

PAU - Paramedic Assessment Unit
PME - Paramedic Engine

OCFA FIRE STATIONS
Proudly Serving the Communities of...

ALISO VIEJO, Station 57
BUENA PARK, Station 61
BUENA PARK, Station 62
BUENA PARK, Station 63
COSTA MESA, AIRPORT, Station 33
COTO DE CAZA, Station 40
CYPRESS, Station 12
CYPRESS, TRI-CITIES, Station 17
DANA POINT, DOHENY, Station 29
DANA POINT, NIGUEL, Station 30
EMERALD BAY, Station 11
FOOTHILL RANCH, Station 54
FULLERTON, AIRPORT, Station 41
IRVINE, Station 6
IRVINE, Station 38
IRVINE, INDUSTRIAL, Station 28
IRVINE, UNIVERSITY, Station 4
IRVINE, VALENCIA, Station 26
IRVINE, WOODBRIDGE, Station 36
LA PALMA, Station 13
LAGUNA HILLS, Station 22
LAGUNA NIGUEL, Station 5
LAGUNA NIGUEL, BEAR BRAND, Station 49
LAGUNA NIGUEL, NORTH, Station 39
LAKE FOREST, Station 19
LOS ALAMITOS, Station 2
MIDWAY CITY, Station 25
MISSION VIEJO, Station 24
MISSION VIEJO, NORTH, Station 31
MISSION VIEJO, SOUTH, Station 9
MODJESKA, Station 16
NEWPORT COAST, Station 52
ORANGE, Station 1
PLACENTIA, BRADFORD, Station 35
PLACENTIA, VALENCIA, Station 34
PORTOLA HILLS, Station 42
RANCHO SANTA MARGARITA, Station 45
SAN CLEMENTE, Station 50
SAN CLEMENTE, Station 59
SAN CLEMENTE, Station 60
SAN JUAN CAPISTRANO, Station 7
SANTA ANA, AIRPORT, Station 27
SKYLINE, Station 8
SEAL BEACH, DOWNTOWN, Station 44
SEAL BEACH, FRWY, Station 48
SILVERADO, Station 14
SILVERADO (USFS), Station 15
STANTON, Station 46
SUNSET BEACH, Station 3
TRABUCO, Station 18
TUSTIN, Station 21
TUSTIN, Station 37
TUSTIN RANCH, Station 43
VILLA PARK, Station 23
WESTMINSTER, Station 64
WESTMINSTER, Station 65
WESTMINSTER, Station 66
YORBA LINDA, Station 10
YORBA LINDA, Station 53
YORBA LINDA, EAST, Station 32